

26 March 2019 Storm Event



25 March - Preparations

- Severe weather warning issued
- EOC activated on 25 March
- Liaison with external agencies
- Contractors put on standby



26 March - Storm Damage

- Approximately 400km from Kumara Junction to Jackson's Bay
- State of Emergency declared
- Surface flooding around the region
- Landslips
- Rising rivers and bridge losses
- Power / telecommunications outages
- Roads compromised





Upper Kokatahi Road – River Washout



Lansburgh Bridge - Washout



Rose Creek – Debris buildup



Hari Hari Highway – Surface Flooding



Fording the Waiho River after
bridge washed away

Building Community Resilience

- Emergency Operations Centre
- Volunteers
- Communications and emergency Resources
- Iwi contribution



Civil Defence Training Session – Franz Josef

Fox Glacier Landfill



Mills Creek Slip

- Largest slip in NZ
- Moving 11 cm a day and 70 cm after heavy rain
- Slip contains 70 million cubic metres of material
- Side of the mountain is literally falling down

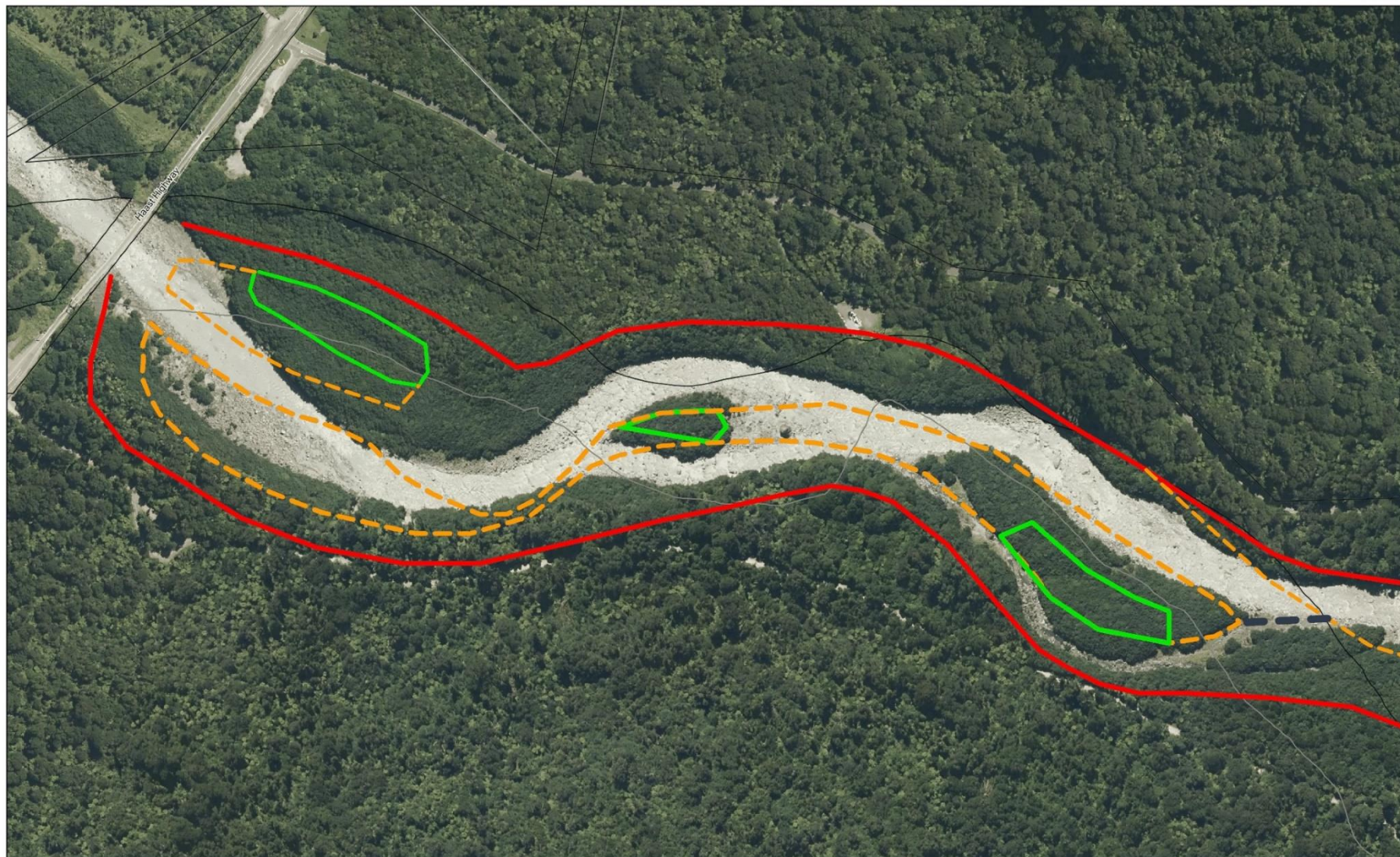


Fox Glacier Material

- Remote areas
- Health and Safety
- Specialist teams for the river bed



Created By: Karl Jackson
Print Date: 9/04/2019
Print Time: 10:14 AM



Scale: 1:2500
Original Sheet Size A3

Projection:
Bounds:

NZGD49 / New Zealand Map Grid
2267670 18066524 5742801 26505487
2269203 42834876 5743732 71563353

Sourced from LINZ data, Crown Copyright reserved. Not to be reproduced without permission of Westland DC.
The information shown on this plan may not be accurate and is indicative only.
The Westland District Council accepts no responsibility for incomplete or inaccurate information.

Fox Landfill Response and Recovery



- EOC on site
- Temporary protection works



Fox Landfill Recovery continued

Doc took over as lead agency

- Doc staff and volunteers
- NZ Defence Force came on board, assisted with the clean-up and provided helicopters to get to the remote sites
- Council remained involved, carting material to open landfills in the district
- Longer term solutions being identified

What now?

- In the medium term further protection works are required
- Options for long term permanent solutions being considered
 - Further Capping
 - Digging out landfill and moving material
- Test case for other at risk Landfills
 - Westland landfills
 - NZ at risk landfills

Questions

