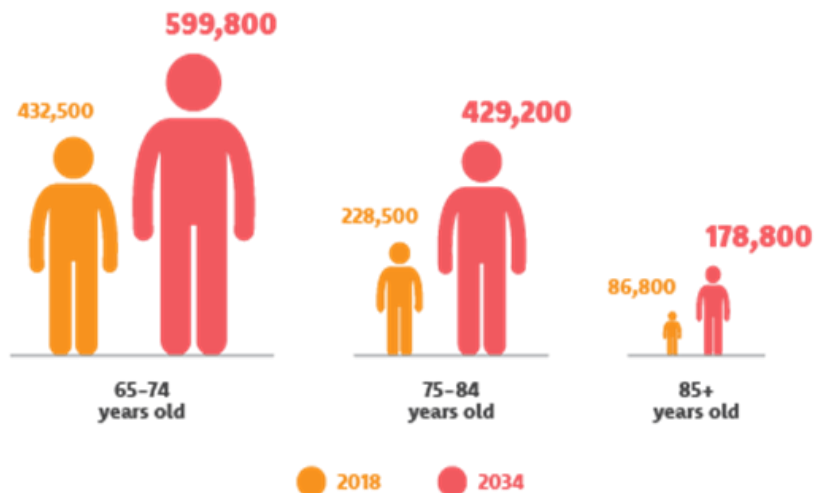


Creating Accessible Communities

SOLGM 2019



Demographics - 2034



637,500 → 928,200

European or other (including New Zealander)

59,500 → 171,900

Asian

48,500 → 109,400

Māori

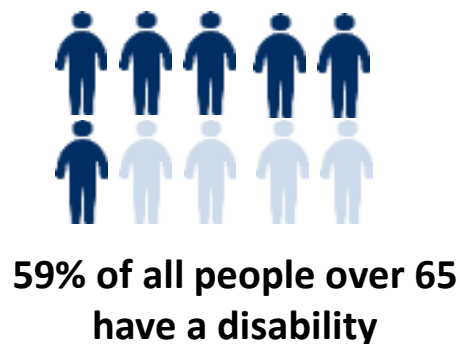
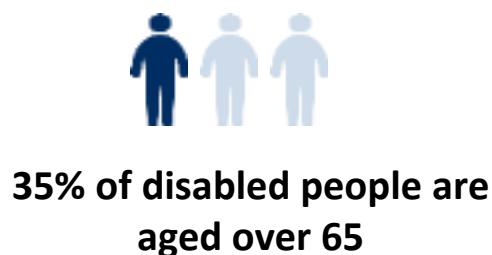
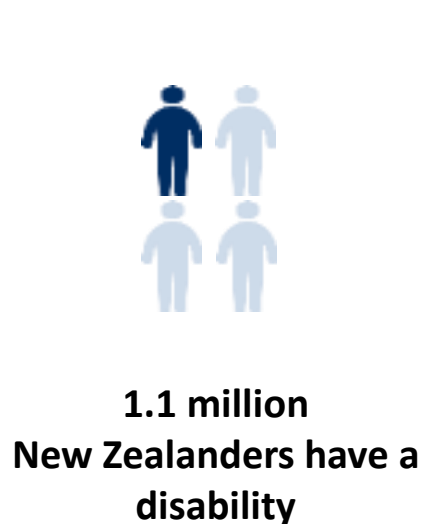
21,300 → 46,700

Pacific Peoples

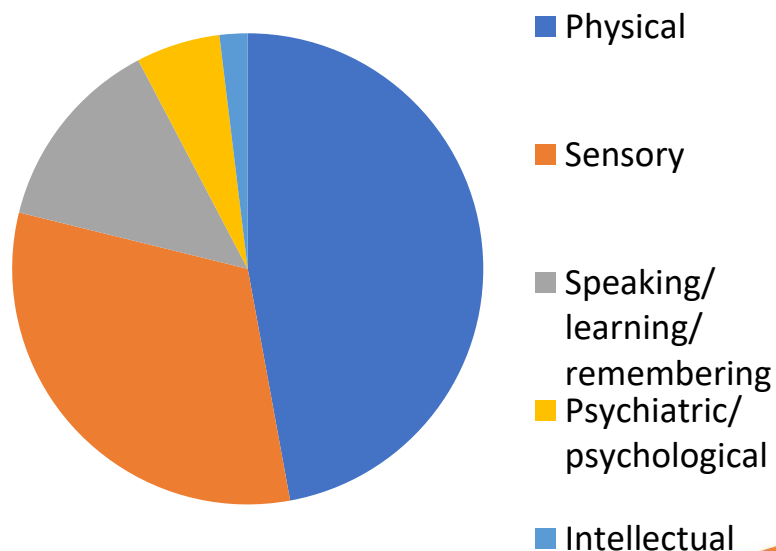
4,000 → 18,000

Middle Eastern / Latin American / African

Disability data for over 65s



Main impairment type for over 65s



Vision

**Older New Zealanders lead valued,
connected and fulfilling lives**



Guiding Principles

- **Valuing people as they age**
- **Keeping people safe**
- **Recognising diversity and that everyone is unique**
- **Taking a whole-of-life and whānau-centred approach to ageing**
- **Taking collective responsibility to plan and act for later life**

Key areas for action



Achieving financial security and economic participation



Promoting healthy ageing and improving access to social services



Creating diverse housing choices and options



Enhancing opportunities for participation and social connection



Making environments accessible



Making environments accessible

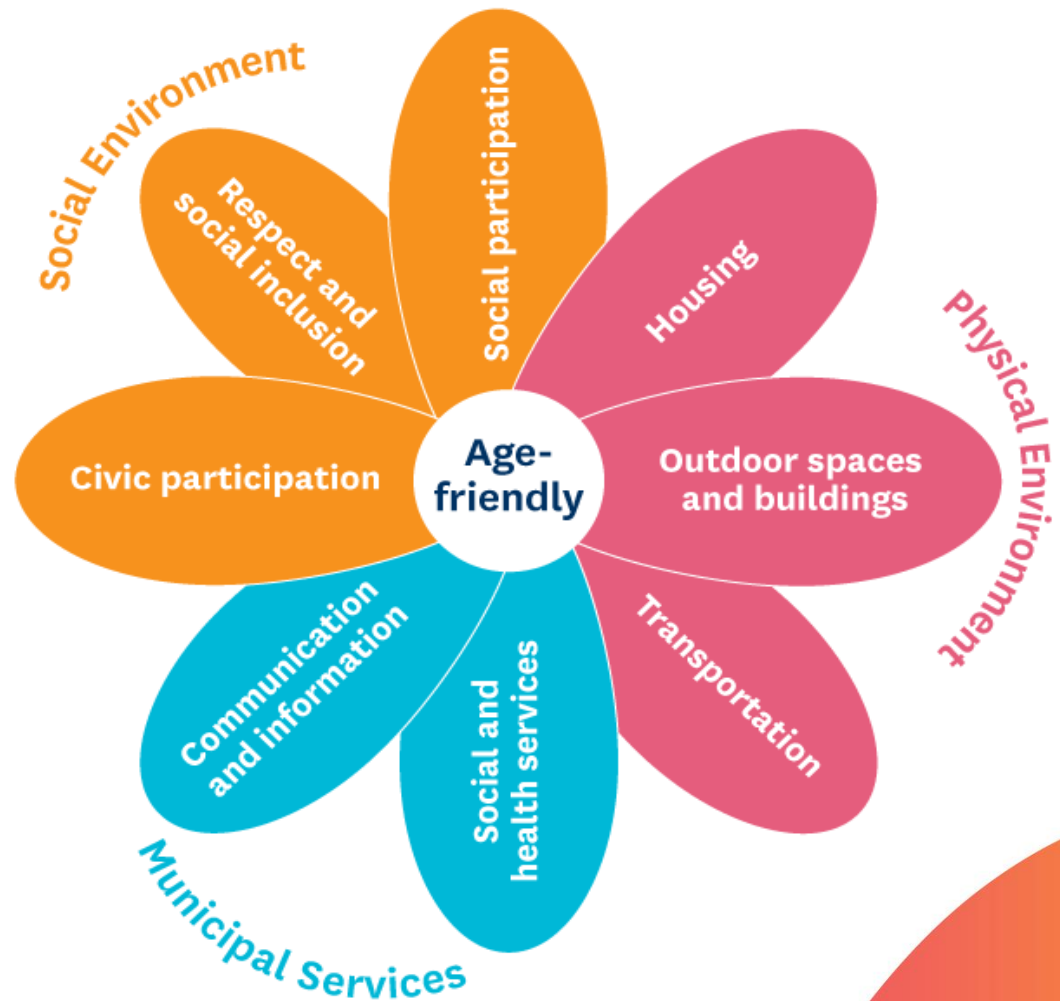
- **Communities, facilities, places and spaces are age-friendly and accessible**
- **As we age we can easily and safely get to where we want to go to**





Making environments accessible

- Supporting the implementation of the Age friendly Aotearoa/New Zealand Programme





Making environments accessible

- As we age, we can easily and safely get to where we want to go



Key areas for action



Achieving financial security and economic participation



Promoting healthy ageing and improving access to social services



Creating diverse housing choices and options



Enhancing opportunities for participation and social connection



Making environments accessible



Office for Seniors

Te Tari Kaumātua

Administered by the Ministry of Social Development



superseniors.msd.govt.nz



osc@msd.govt.nz



[@OfficeforSeniors](https://www.facebook.com/OfficeforSeniors)



[@SuperSeniorsNZ](https://twitter.com/SuperSeniorsNZ)



Office for Seniors
Te Tari Kaumātua

Administered by the Ministry of Social Development

New Zealand Government